

**Anti-CD1a / HTA1 Antibody**  
**Recombinant Rabbit Monoclonal Antibody**  
**Catalog # AH13598****Specification**

---

**Anti-CD1a / HTA1 Antibody - Product Information**

Application	IHC-P, IF, FC
Primary Accession	<a href="#">P06126</a>
Other Accession	<a href="#">1309</a>
Reactivity	Human
Host	Rabbit
Clonality	Monoclonal
Isotype	Rabbit / IgG, kappa
Calculated MW	37077

**Anti-CD1a / HTA1 Antibody - Additional Information****Gene ID** 909**Other Names**

Cortical thymocyte antigen CD1A, Epidermal dendritic cell marker CD1a antibody, FCB6, HTA1, T cell surface antigen T6 / Leu 6, T-Cell Surface Glycoprotein CD1A

**Application Note**

IHC-P~N/A  
IF~1:50~200  
FC~1:10~50

**Format**

200ug/ml of Ab purified by Protein A Column. Prepared in 10mM PBS with 0.05% BSA & 0.05% azide. Also available WITHOUT BSA & azide at 1.0mg/ml.

**Storage**

Store at 2 to 8°C. Antibody is stable for 24 months.

**Precautions**

Anti-CD1a / HTA1 Antibody is for research use only and not for use in diagnostic or therapeutic procedures.

**Anti-CD1a / HTA1 Antibody - Protein Information****Name** CD1A**Function**

Antigen-presenting protein that binds self and non-self lipid and glycolipid antigens and presents them to T-cell receptors on natural killer T-cells.

**Cellular Location**

Cell membrane; Single-pass type I membrane protein. Membrane raft; Single-pass type I

membrane protein. Endosome membrane; Single-pass type I membrane protein. Note=Subject to intracellular trafficking between the cell membrane and endosomes (PubMed:11231314). Localizes to cell surface lipid rafts (PubMed:18178838).

#### **Tissue Location**

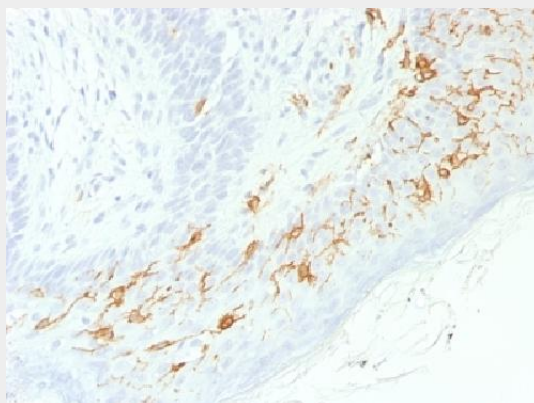
Expressed on cortical thymocytes, epidermal Langerhans cells, dendritic cells, on certain T-cell leukemias, and in various other tissues.

#### **Anti-CD1a / HTA1 Antibody - Protocols**

Provided below are standard protocols that you may find useful for product applications.

- [Western Blot](#)
- [Blocking Peptides](#)
- [Dot Blot](#)
- [Immunohistochemistry](#)
- [Immunofluorescence](#)
- [Immunoprecipitation](#)
- [Flow Cytometry](#)
- [Cell Culture](#)

#### **Anti-CD1a / HTA1 Antibody - Images**



Formalin-fixed, paraffin-embedded human Skin stained with CD1a Recombinant Rabbit Monoclonal Antibody (C1A/1506R).

#### **Anti-CD1a / HTA1 Antibody - Background**

At least five CD1 genes (CD1a, b, c, d, and e) are identified. CD1 proteins have been demonstrated to restrict T cell response to non-peptide lipid and glycolipid antigens and play a role in non-classical antigen presentation. CD1a is a non-polymorphic MHC Class 1 related cell surface glycoprotein, expressed in association with Beta-2 microglobulin. Anti-CD1a labels Langerhans cell histiocytosis (Histiocytosis X), extranodal histiocytic sarcoma, a subset of T-lymphoblastic lymphoma/leukemia, and interdigitating dendritic cell sarcoma of the lymph node. When combined with antibodies against TTF-1 and CD5, anti-CD1a is useful in distinguishing between pulmonary and thymic neoplasms since CD1a is consistently expressed in thymic lymphocytes in both typical and atypical thymomas, but only focally in 1/6 of thymic carcinomas and not in lymphocytes in pulmonary neoplasms. Anti-CD1a is reported to be a new marker for perivascular epithelial cell tumor (PEComa).